

Prem Se Tu Gale

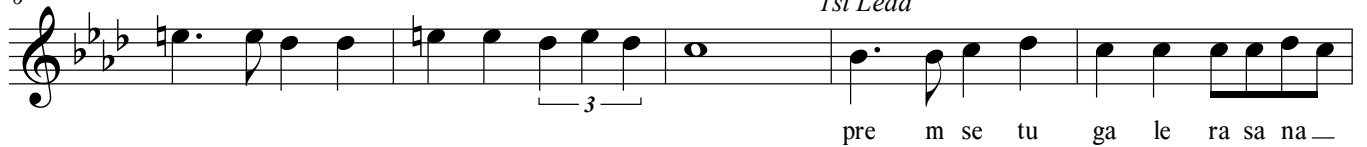
Flute, Violin, Oboe

Introduction



6

1st Lead



11



16

Follow



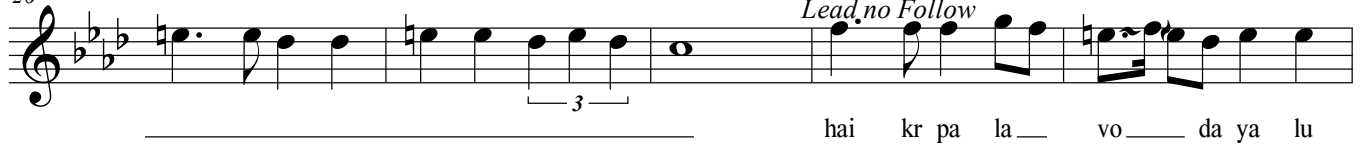
21

Interlude



26

Lead no Follow



31

Lead no Follow



36

Lead no Follow

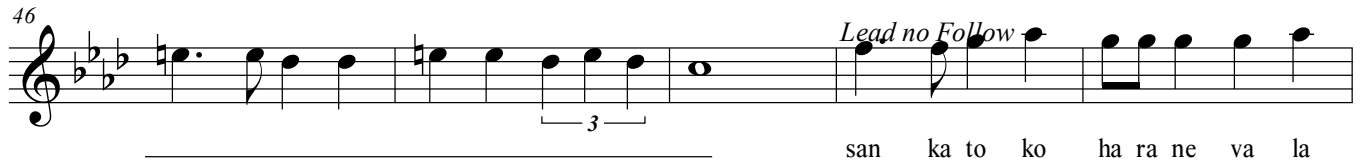


41 *Lead no Follow* *Interlude*



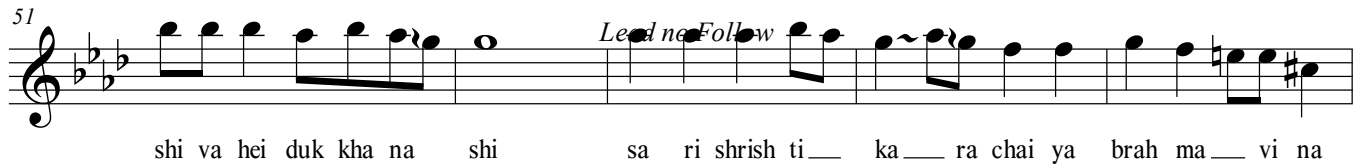
pre m se tu ga le ra s na na m shi v ji ka

46 *Lead no Follow*



san ka to ko ha ra ne va la

51 *Lead no Follow*



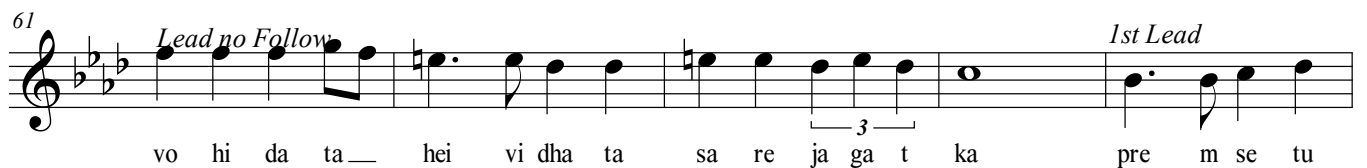
shi va hei duk kha na shi sa ri shrish ti ka ra chai ya brah ma vi na

56 *Lead no Follow*



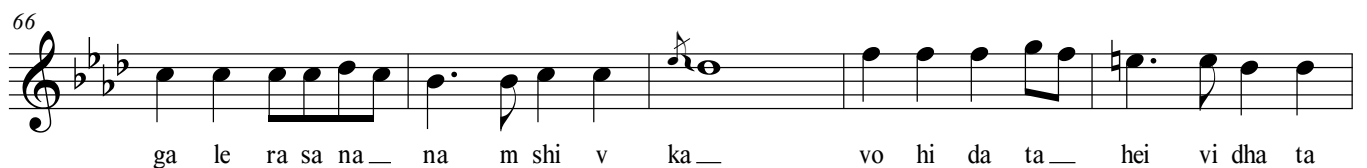
si nya na se u sa me u ta ra na na m shi v ji ka

61 *Lead no Follow* *1st Lead*



vo hi da ta hei vi dha ta sa re ja ga t ka pre m se tu

66



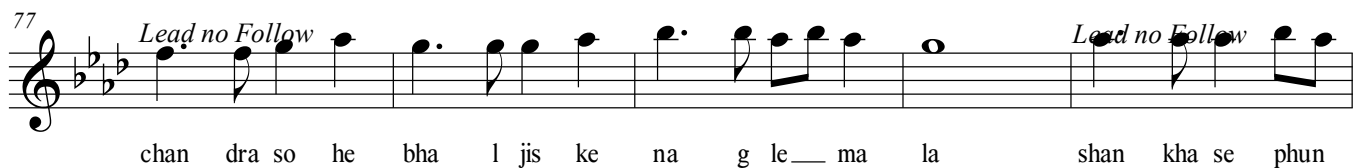
ga le ra sa na na m shi v ka vo hi da ta hei vi dha ta

71 *Interlude*



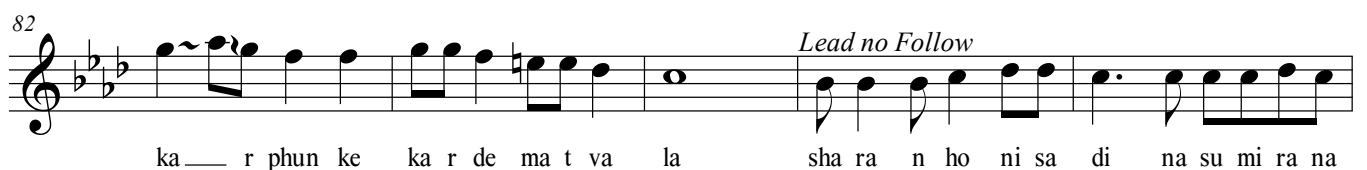
sa re ja ga t ka

77 *Lead no Follow* *Lead no Follow*



chan dra so he bha l jis ke na g le ma la shan kha se phun

82 *Lead no Follow*



ka r phun ke ka r de ma t va la sha ra n ho ni sa di na su mi ra na

87 *Lead no Follow*

na m shi v ji ka vo hi da ta hei vi dha ta sa re ja ga t

92 *Interlude* *1st Lead*

ka pre m se tu

98

ga le ra s na na m shi v ji ka vo hi da ta hei vi dha ta

103 *Follow*

sa re ja ga t ka pre m se tu ga le ra s na na m shi v ji

108 *Ending Line* *1st Ending* *2nd Ending*

ka vo hi da ta hei vi dha ta sa re ja ga t ka vi dha ta

113 *Final Ending*

sa re ja ga t ka vi dha ta sa re ja ga t ka