

Prem Se Tu Gale

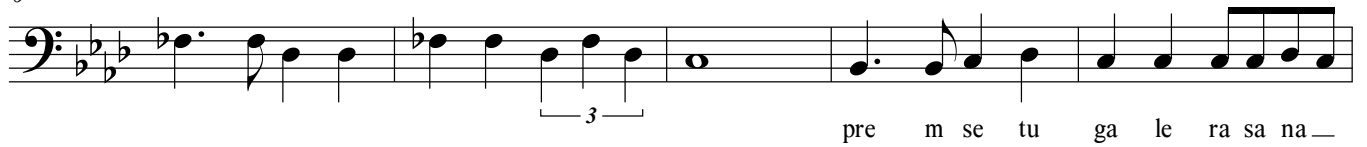
Cello, Double Bass, Bassoon, Euphonium, Trombone

Introduction



6

1st Lead

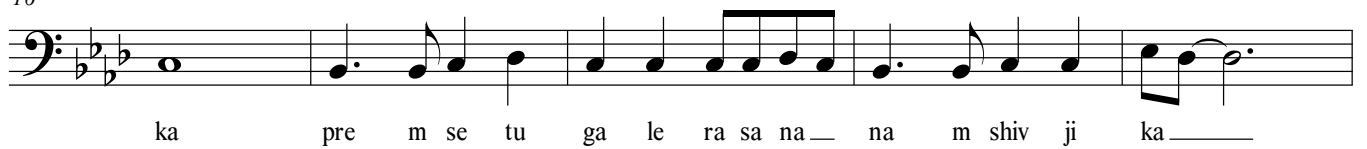


11



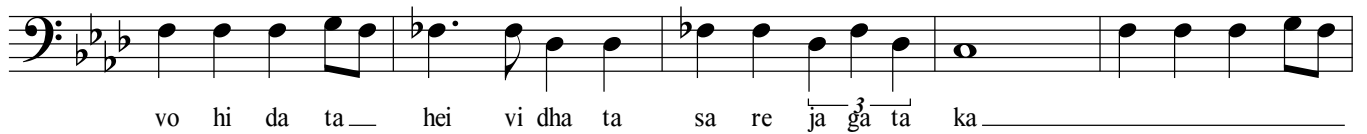
16

Follow



21

Interlude



26

Lead no Follow



31

Lead no Follow



36

Lead no Follow



41 *Lead no Follow* *Interlude*

pre m se tu — ga le — ra s na na m shi v ji ka —

46 *Lead no Follow*

san ka to ko ha ra ne va la

51 *Lead no Follow*

shi va hei duk kha na — shi sa ri shrish ti — ka — ra chai ya brah ma — vi na

56 *Lead no Follow*

si nya na se u sa me u ta ra na — na m shi v ji ka —

61 *Lead no Follow* *1st Lead*

vo hi da ta — hei vi dha ta sa re ja ga t ka pre m se tu

66

ga le ra sa na — na m shi v ka — vo hi da ta — hei vi dha ta

71 *Interlude*

sa re ja ga t ka —

77 *Lead no Follow* *Lead no Follow*

chan dra so he bha l jis ke na g le — ma la shan kha se phun

82 *Lead no Follow*

ka — r phun ke ka r de ma t va la sha ra n ho ni sa di na su mi ra na

87

Lead no Follow

na m shi v ji ka__ vo hi da ta__ hei vi dha ta sa re ja ga t

92

Interlude

1st Lead

ka _____ pre m se tu

98

ga le ra s na na m shi v ji ka vo hi da ta__ hei vi dha ta

103

Follow

sa re ja ga t ka pre m se tu ga le ra s na na m shi v ji

108

Ending Line

1st Ending

2nd Ending

ka vo hi da ta__ hei vi dha ta sa re ja ga t ka vi dha ta

113

Final Ending

sa re ja ga t ka vi dha ta sa re ja ga t ka