

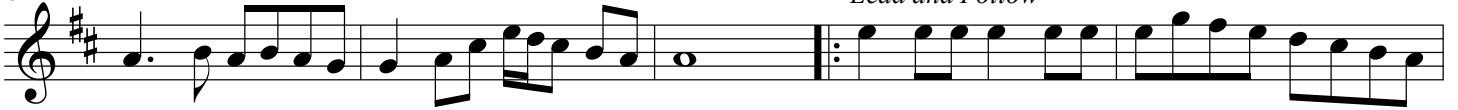
# Kheti Karo

Alto or Bari Sax

## Introduction



## 6 *Lead and Follow*

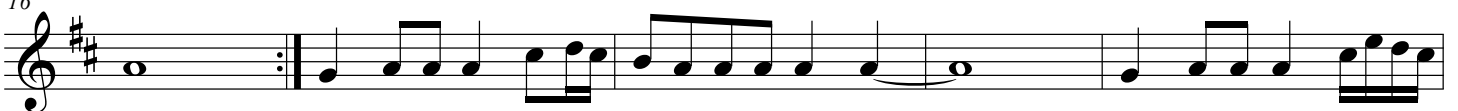


khe ti ka ro ha ri na\_\_ ma ki ma na va\_\_



khe ti ka ro\_\_ ha ri nam khe ti ka ro\_\_ ha ri nam re ma na va\_\_ khe ti ka ro\_\_ ha ri

## 16 *Lead* *Variation*



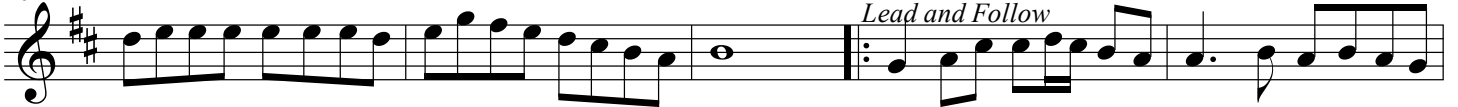
nam pai sa na la ge\_\_ ru pa ya na la ge\_\_ pai sa na la ge\_\_

## 21 *Lead* *Variation*



ru pa ya na la ge kau da na la ge\_\_ phu ta ki ma na va\_\_ kau da na la ge\_\_

## 26 *Lead No Follow* *Lead and Follow*



phu ta ki ma na va\_\_ khe ti ka ri\_\_ ha ri nam khe ti ka ro\_\_ ha ri nam re ma na va\_\_

## 31 *Lead and Follow*



khe ti ka ro\_\_ ha ri nam khe ti ka ro ha ri na ma ki ma na va\_\_ khe ti ka ro\_\_ ha ri



nam khe ti ka ro\_\_ ha ri nam re ma na va\_\_ khe ti ka ro\_\_ ha ri nam

41 *Interlude* *Lead*

ma na ke\_\_ bai la su

46 *Variation* *Lead and Follow*

ra ta po\_\_ ha ve\_\_\_\_ ma na ke\_\_ bai la su ra ta po\_\_ ha ve\_\_ ras si lag va na gu ru

51 *Lead and Follow*

nya na ki ma na va\_\_\_\_ gu ru nya na ki ma na va\_\_\_\_ khe ti ka ro ha ri

56

na\_\_ ma ki ma na va\_\_ khe ti ka ro\_\_ ha ri nam khe ti ka ro\_\_ ha ri nam re ma na va\_\_

61 *Interlude*

khe ti ka ro\_\_ ha ri nam

66 *Lead* *Variation*

ka ha ta ka bi ra\_\_\_\_ su no bhai sa dho\_\_\_\_ ka ha ta ka bi ra\_\_\_\_

71 *Lead* *Variation*

su no bhai sa dho bhak ti ka ro ha ri ji\_\_ ki ma na va\_\_\_\_ bhak ti ka ro ha ri

76 *Lead No Follow*

ji\_\_ ki ma na va\_\_ khe ti ka ro\_\_ ha ri nam khe ti ka ro\_\_ ha ri nam ki ma na va\_\_

81 *Lead and Follow*

khe ti ka ro\_\_ ha ri nam khe ti ka ro ha ri na ma ki ma na va khe ti ka ro\_\_ ha ri

86

nam khe ti ka ro\_\_\_ ha ri nam re ma na va\_\_\_ khe ti ka ro\_\_\_ ha ri nam

Detailed description: This block contains the first line of music, measures 86 to 90. It is written on a single treble clef staff with a key signature of one sharp (F#). The melody consists of a series of eighth and quarter notes, with some beamed sixteenth notes. There are two bar lines, one at the end of measure 87 and another at the end of measure 90, which is marked with a repeat sign. The lyrics are placed below the notes, with horizontal lines indicating syllable alignment.

91 *Second Ending* *Final Ending*

khe ti ka ro\_\_\_ ha ri nam ki ma na va khe ti ka ro\_\_\_ ha ri nam khe ti ka ro\_\_\_ ha ri

Detailed description: This block contains the second line of music, measures 91 to 95. It is written on a single treble clef staff with a key signature of one sharp (F#). The melody continues from the previous line. Measures 91-94 are labeled as the 'Second Ending' and measure 95 as the 'Final Ending'. There are two bar lines, one at the end of measure 94 and another at the end of measure 95. The lyrics are placed below the notes, with horizontal lines indicating syllable alignment.

96 *rit.*

nam ki ma na va\_\_\_ khe ti ka ro\_\_\_ ha ri nam

Detailed description: This block contains the third line of music, measures 96 to 100. It is written on a single treble clef staff with a key signature of one sharp (F#). The melody continues from the previous line. Measure 96 is marked with 'rit.' (ritardando). There are two bar lines, one at the end of measure 99 and another at the end of measure 100. The lyrics are placed below the notes, with horizontal lines indicating syllable alignment.