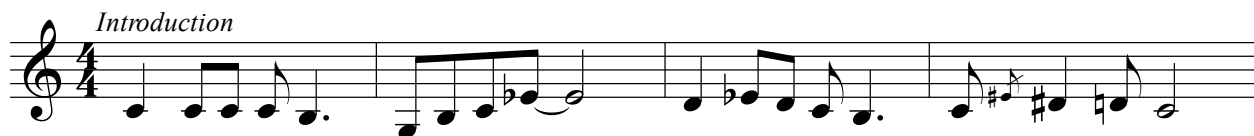


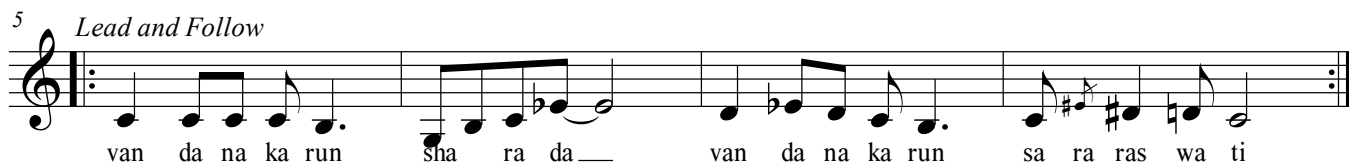
Vandan Karun Sharada

Clarinet, Tenor Sax, Bass Clarinet

Introduction



5 *Lead and Follow*



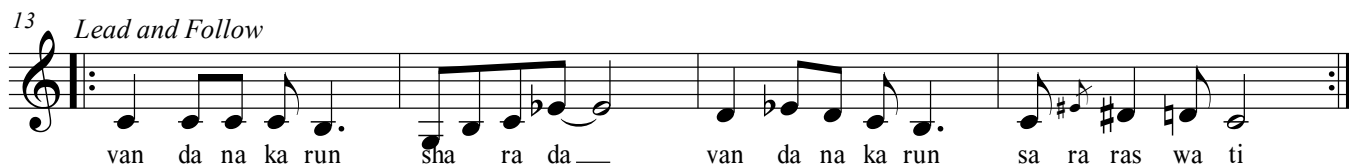
van da na ka run sha ra da— van da na ka run sa ra ras wa ti

9 *Lead and Follow*



ma ta pi ta tu a khi la ja ga ta ki— a khi la ja ga ta ki

13 *Lead and Follow*



van da na ka run sha ra da— van da na ka run sa ra ras wa ti

17 *Interlude*



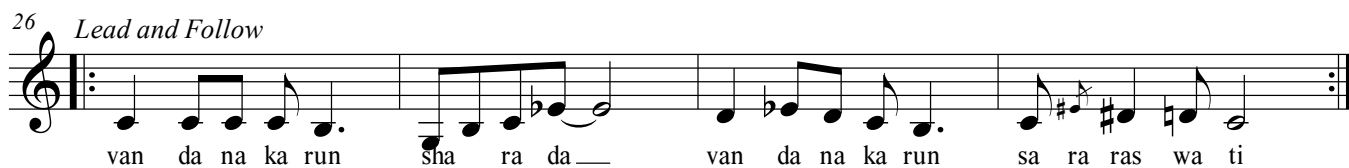
a di—ma ya tu

22



1. a dhi bha va— ni— tu pra ti pa— la ka ha ma— ri ja na ni

26 *Lead and Follow*



van da na ka run sha ra da— van da na ka run sa ra ras wa ti

30 *Interlude* *Lead and Follow*



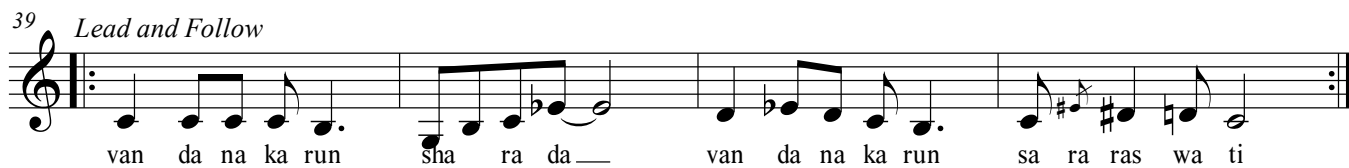
ja na ma de ta tu

35

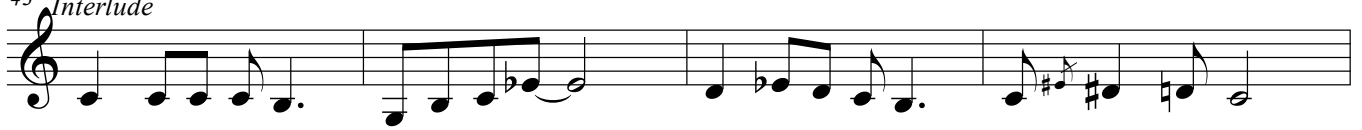


1. rak sha ka— ma— ni— 2. pur na kr pa— ka ra ha ma pa ra ja na ni

39 *Lead and Follow*



van da na ka run sha ra da— van da na ka run sa ra ras wa ti

43 *Interlude*47 *Lead and Follow*

1. *Skip 2nd Time* 2. *Lead and Follow*

a ba ha ma ba la ka sha ra na ti ha ri da ya drush ti ho

51 *Lead and Follow*

ja na ni tum ha ri van da na ka run sha ra da van da na ka run

55 *Interlude*

sa ra ras wa ti

59 *Lead and Follow*

1. *Skip 2nd Time*

sha ran na ga ta ki la ja ba kha ni

63 *Lead and Follow*

2. 3. *Lead and Follow*

tu pra ti pa la ka hama ri ja na ni van da na ka run sha ra da

67 *Interlude*

van da na ka run sa ra ras wa ti

72 *Lead and Follow*

van da na ka run sha ra da van da na ka run

77 *2nd Ending*

Final Ending

sa ra ras wa ti van da na ka run sa ras wa ti van da na ka run

81

A single staff of music in treble clef. The melody consists of four notes: a quarter note 'sa' on the G line, a quarter note 'ras' on the F# line with a fermata, a quarter note 'wa' on the E line, and a quarter note 'ti' on the D line. The staff ends with a double bar line.