

Guru Mata Guru Pita

Alto and Bari Sax

Intro

Lead

5 gu ru ma ta gu ru

9 pi ta — gu ru ban dha sa kha gu ru ma ta gu ru pi ta — gu ru **Follow**

13 ban dha sa kha gu ru ma ta — gu ru pi ta — gu ru ban dha sa kha gu ru **Lead**

17 ma ta — gu ru pi ta — gu ru ban dha sa kha te re cha ra no me me ra **Follow**

21 ko — ti pra na ko ti pra nam — ko ti pr nam te re cha ra no me me ra **Lead**

25 ko — ti pra na ko ti pra nam — ko ti pr nam — gu ru ma ta — gu ru **Follow**

29 pi ta — gu ru ban dha sa kha gu ru ma ta — gu ru pi ta — gu ru **Interlude** **Lead**

34 ban dha sa kha — tum hi bhak ti ho tum hi **Follow**

38 shak ti ho tum hi muk ti ho me re shya ma shi va — shya ma shi va tum hi

42 bhal ti ho tum hi sak ti ho tum hi muk ti ho me re shya ma shi va — **Lead** **Follow**

46 shya ma shi va — gu ru ma ta — gu ru pi ta — gu ru ban dha sa kha gu ru **Lead**

ma ta — gu ru pi ta — gu ru ban dha sa kha — tum hi



pre ra na tum hi sa dha na tum hi a ra dha na me re shya ma shi va



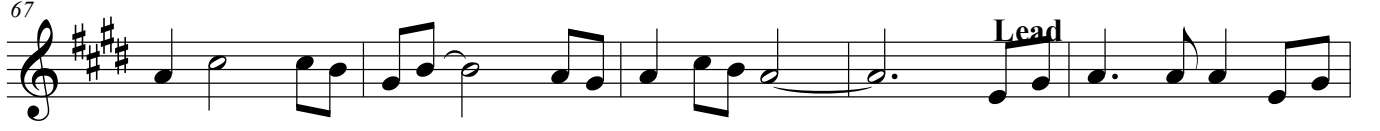
shya ma shi va tum hi pre ra na tum hi sa dha na tum hi a ra dha na me re



shya ma shi va shya ma shi va gu ru ma ta gu ru pi ta gu ru



ban dha sa kha gu ru ma ta gu ru pi ta gu ru ban dha sa kha



tum hi pre ma ho tum hi



ka ru na ho tum hi jyo ta ho me re shya ma shi va tum hi pre ma ho tum hi



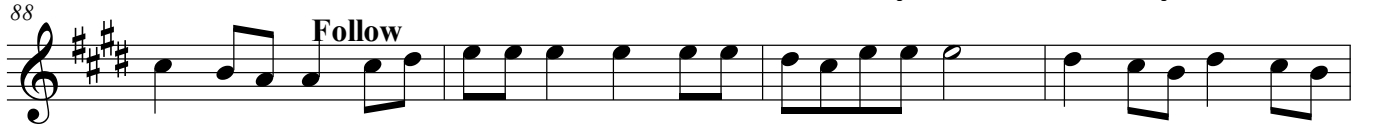
ka ru na ho tum hi jyo ta ho me re shya ma shi va gu ru ma ta gu ru



pi ta gu ru ban dha sa kha gu ru ma ta gu ru pi ta gu ru



ban dha sa kha te re cha ra no me me ra ko ti pra na ko ti pra nam



ko ti pr nam te re cha ra no me me ra ko ti pra na ko ti pra nam



ko ti pr nam gu ru ma ta gu ru pi ta gu ru ban dha sa kha gu ru



ma ta gu ru pi ta gu ru ban dha sa kha gu ru ban dha sa kha gu ru

100 **Final Ending**

ban dha sa kha

The image shows a musical score for the final ending of the song 'Guru Mata Guru Pita'. It is marked with the number 100 and the title 'Final Ending'. The music is written on a single staff in treble clef with a key signature of three sharps (F#, C#, G#). The melody consists of four notes: a quarter note 'ban', a half note 'dha', a quarter note 'sa', and a quarter note 'kha'. The notes 'dha' and 'sa' are connected by a horizontal line, indicating they are part of the same rhythmic unit. The piece concludes with a double bar line.